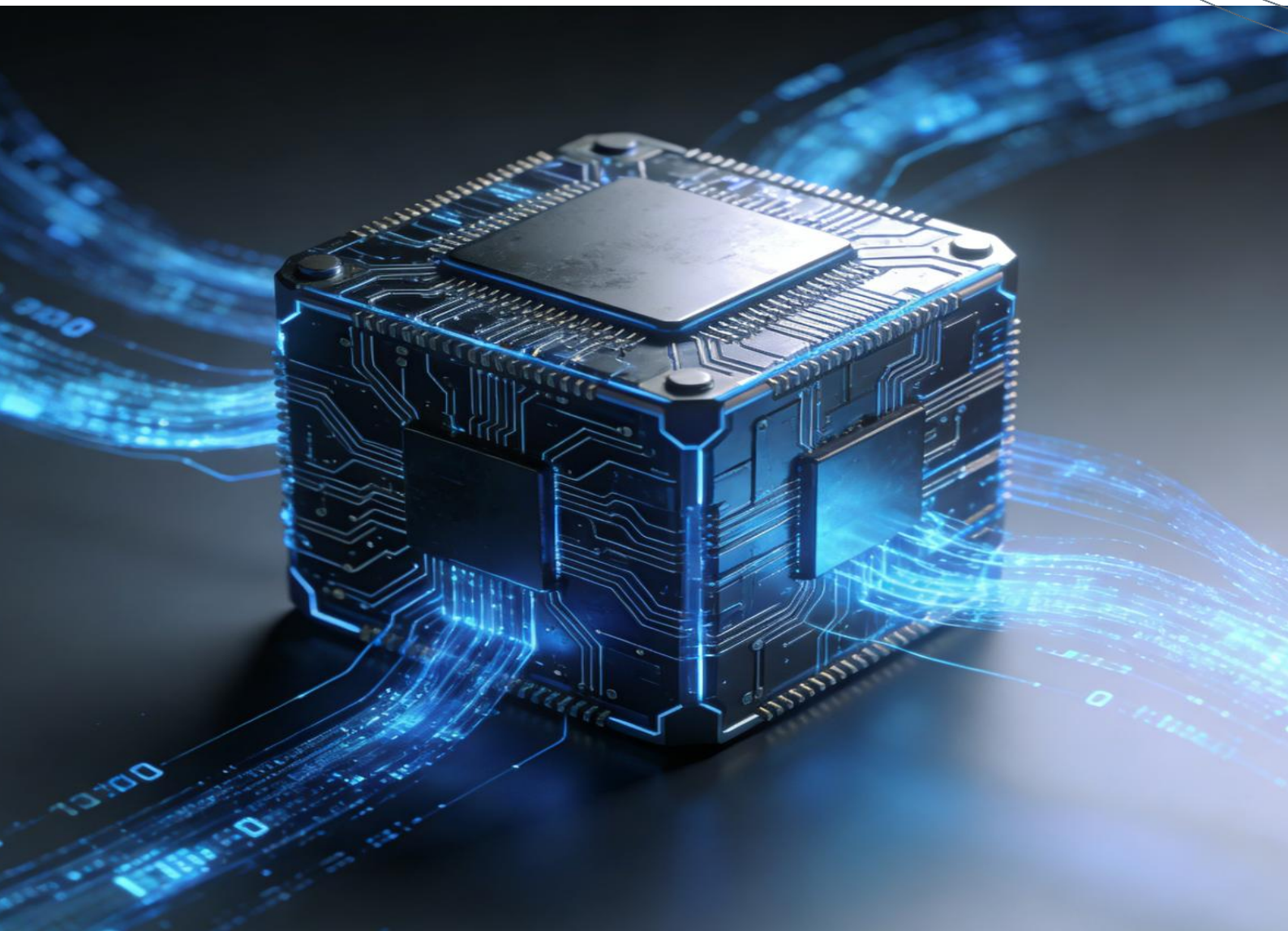


CIC 灼识



Global Edge AI Inference Chip Industry Report

© 2026 CIC. All rights reserved. This document contains highly confidential information and is solely for the use of our client.

No part of it may be circulated, quoted, copied or otherwise reproduced without the written consent of CIC.

Executive Summary

With the proliferation of global smart devices now surpassing billions, the immense demand for real time data processing is catalyzing a revolution in computing architectures. As a distributed open platform, edge computing enables the offloading of data processing and storage capabilities to the network edge, establishing a decentralized computing paradigm characterized by low latency, high energy efficiency, and robust privacy protection. At the core of this shift are edge AI inference chips.

Table of Contents

1. Market Overview

1.1 Market Definition

1.2 Market Size and Shipment

2. Future Outlook

1. Market Overview

1.1 Market Definition

Edge AI inference chips are deployed in edge servers, gateways, or base stations closer to data sources. They perform real-time local inference, which on the other hand demands a careful balance between strong performance and power efficiency to ensure low latency, data security, and operational stability.

Edge AI inference chips serve as the essential hardware foundation for edge computing. Their form factors are becoming increasingly diverse. Among them, edge computing boxes and integrated machines are seeing rapid adoption due to their plug-and-play convenience, strong energy efficiency, and seamless integration of software and hardware.

1.2 Market Size and Shipment

The market size of edge AI inference chips in China, in terms of revenue, expected to grow from **RMB626.6 million** in 2024 to **RMB5.7 billion** by 2030, with a CAGR of 44.4% from 2024 to 2030.

China's Edge AI Inference Chip Revenue, 2022–2030E

(RMB Billion)



China's shipments were around 0.8 million units in 2024, and are expected to reach 12.1 million units by 2030, representing a CAGR of 56.6% from 2024 to 2030.

China's Edge AI Inference Chip Shipments, 2022–2030E

(Million Units)



Note: Refers specifically to AI chips used in edge computing applications, delivered in the form of AI boxes or integrated machines; excludes



CIC Reports | Global Edge AI Inference Chip Industry Report

general-purpose cloud/edge chips.

*Source: CIC Reports, interviews with market participants, industry publications,
government statistics, listed companies' public filings, news*

2. Future Outlook

Lightweight solutions, powered by low-power chips and optimized through model compression, enable real-time applications such as quality inspection in industrial manufacturing, safety alerts in smart cities, and equipment detecting in energy systems. In smart homes, edge computing boxes can act as intelligent hubs—equipped with multi-protocol communication modules—to connect and control household devices in real time. Meanwhile, edge inference chips are also widely applied in information innovation scenarios, including government and public services, finance, energy and power, telecommunications, education, healthcare, and other sectors, such as internet services, smart manufacturing, and research laboratories. China's edge AI inference chip market is still in its early stage. However, growing demands for data security and localized processing are expected to drive rapid expansion.



About CIC

CIC is a professional consulting firm offering tailored end-to-end support across the full investment and financing lifecycle. The firm boasts a world-leading track record in guiding landmark first-in-sector IPOs across global markets, alongside unrivaled reach and in-depth coverage capabilities across specialized niche market segments.

CIC helps enterprises refine scalable business models and craft compelling capital narratives to enable seamless access to global capital markets, while serving as a trusted due diligence partner to investment institutions. It delivers granular industry insights and direct access to subject matter experts, empowering clients to identify high-value opportunities and mitigate critical risks effectively.

CIC team maintains deep, real-time market intelligence across a diverse set of sectors—including financial services, artificial intelligence, big data, internet, high technology, healthcare, education, entertainment, consumer goods, transportation and logistics, energy and power, environmental and building technology,



CIC Reports | Global Edge AI Inference Chip Industry Report

chemicals, industrial manufacturing, and agriculture—delivering unparalleled access to sector-specific, actionable insights.

CIC Reports & Industry Overview

At CIC, we employ a rigorous, multi-method research framework, combining primary and secondary sources to underpin our analysis. Primary research involves in-depth engagements with industry thought leaders and practitioners, particularly in supply chain finance. Secondary research synthesizes publicly available datasets from authoritative bodies, including the National Bureau of Statistics of the People's Republic of China, the State Administration of Financial Regulation (SAFR, formerly the China Banking and Insurance Regulatory Commission), the China Securities Regulatory Commission (CSRC), and public company filings. We apply proprietary data analytics frameworks to process collected information, validating findings through cross-referencing data from multiple research streams to ensure analytical rigor and reliability.

All statistical data presented is verifiable and grounded in information available as of the date of this report.



CIC Reports | Global Edge AI Inference Chip Industry Report

Extracts are refined summaries of in-depth CIC industry research reports, highlighting supply and demand trends, key growth drivers, R&D trends and future outlook, etc. of various segmented fields, integrating multi-dimensional insights such as expert interviews, market surveys and industry data analysis.

Disclaimer

This report (the "Report") is prepared by CIC based on information available as of the date hereof. The Report is furnished strictly for informational and reference purposes only and is not intended to, nor shall it be construed as, being definitive or conclusive. Nothing contained herein shall constitute or be deemed to constitute investment advice, a recommendation, or an offer, solicitation or inducement to engage in any investment activity. CIC hereby expressly disclaims any and all liabilities for any loss, damage or claims of any nature howsoever arising, whether directly or indirectly, from the use of or reliance upon any information contained in the Report.



CIC Reports | Global Edge AI Inference Chip Industry Report

Contact CIC

For more information about this report or to learn more about CIC services, please visit [CIC official website](#), or email us at marketing@cninsights.com.